

## INFORMATION & BOOKINGS

- Join Rudolf Steiner House Mailing List
- Receive Book Catalogues
- Children's Activities
- Information on Room & Theatre Use
- Receive information on Rudolf Steiner and initiatives based on his work

### ENROL FOR THE FOLLOWING WORKSHOPS:

- Creative Discipline Part III
- Rediscovering the Essence of Play
- The Rose: The Queen Of All Flowers
- Developing The Heart Chakra
- What Happens When We Die
- Reading 'The Portal of Initiation'

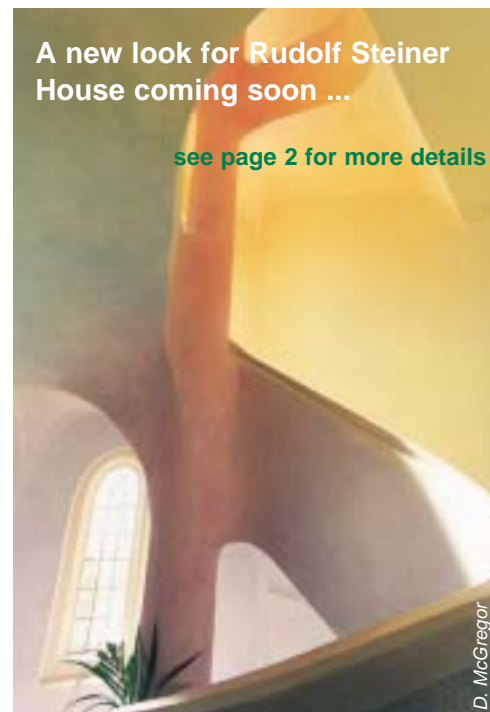
### SPECIAL EVENTS:

- Grief and the Extraordinary Experiences of the Bereaved

### RECEIVE INFORMATION ON:

- London Centre for Steiner Waldorf Education
- London College of Eurythmy

please complete details overleaf



Summer  
Intensives

Extraordinary Grief  
Experiences  
Dr Louis LaGrand

Grail  
Talks

Parenting  
Workshops

# Rudolf Steiner House Summer Events

April - August 2007



35 Park Road London NW1 6XT  
Tel 020 7723 4400 Fax 020 7724 4364  
rsh-office@anth.org.uk www.rsh.anth.org.uk

## STEINER HOUSE & THEATRE

Tel: 020 7723 4400

For use of theatre and rooms in 2008 call the House Co-ordinator (Ext. 202).

## LIBRARY

Membership of the library is free and open to everyone, but those wishing to borrow books who are not members of the Anthroposophical Society in Great Britain will be asked to provide a reference. Please enquire further for details or see the website.

Tel/Fax: 020 7224 8398

email: RSH-Library@anth.org.uk

Opening hours are:

Tue to Thu 11am – 1pm 2pm – 5pm

Fri 1pm – 6pm Sat 12 noon – 5pm

(Tuesdays 1 May– 26 June till 7.30pm)

Hours may be subject to revision due to building work

## RUDOLF STEINER BOOKSHOP

Visa Mastercard Maestro

Weleda and Hauschka products available.

Tel/Fax: 020 7724 7699

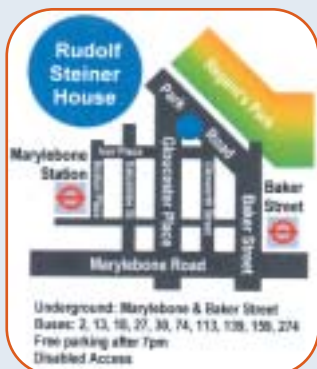
email: RSH-Bookshop@anth.org.uk

Opening hours are:

Mon to Fri 10.30am – 2pm & 3pm – 6pm

Sat 10.30am – 2pm & 3pm – 5pm

**TRANSPORT:** We are situated close to Regent's Park & five minutes walk from Baker Street underground.



## Forthcoming Refurbishments

This Summer, starting in May, and lasting through to December, Rudolf Steiner House will be undergoing major renovation. This will affect the scale and number of activities which we are able to offer: some will still take place in the House, others elsewhere. The theatre will not be available for the duration of the work. Where activities are taking place in other venues, this is clearly indicated in the programme. The bookshop and library will remain open throughout this period, but no catering facilities will be available. We apologise to all our users for the inevitable disruption that these works will cause, but hope that you will appreciate the improvements that will flow from them. More details about the project will follow in the autumn programme.

Best wishes,  
The House Team



photo and design by Axel Ewald

## Tuesday 22 May 7.30pm Grief and the Extraordinary Experiences of the Bereaved

A talk about afterlife contact by Dr Louis LaGrand

This talk will focus on the different types of afterlife contact, what we can learn from them, and nine proven survival skills for coping with the death of a loved one.

Dr LaGrand is based at the State University of New York and is a certified grief counsellor and author of eight books, notably *After 'Death Communications'* and *'Messages and Miracles'*, both of which describe and evaluate the many astonishing afterlife contact stories that LaGrand has heard from the bereaved. His latest book is entitled *'Love Lives On'*. For more information:

[www.extraordinarygriefexperiences.com](http://www.extraordinarygriefexperiences.com)  
£6.50/£4 concessions



## SUMMER INTENSIVES

Wednesday 18 July – Friday 27 July

Do you love Movement?

Do you like Music?

Do you enjoy Poetry?

**Eurythmy Summer School**

with Hajo Dekker, Georgie Tresidder and others

Eurythmy is an art of movement that arose out of the work of Rudolf Steiner and has since been developed by others.

Poetry, music, colour: through eurythmy all soul experiences can be expressed in movement. With its tendency towards beauty and harmony, eurythmy provides food for the soul and puts us back in touch with the creative sources of life, counteracting the hardening influence of everyday living.

Since its creation, the possible applications of eurythmy have expanded. It is an effective support during the process of healing; it is of benefit to children throughout their education; and it enhances social awareness, for example, within large businesses or communities. The classes in eurythmy to poetry and music will be complemented by choral



singing with Anne Ayre and painting with Stella Peters. Everyone is welcome, no previous experience is necessary – bring soft shoes and comfortable clothing.

Hajo Dekker is course director at the London College of Eurythmy and brings a wealth of experience with him. Prior to his 19 years of teaching at the College and at the Peredur Centre for the Arts, he taught and performed extensively throughout the world with the Stuttgart Eurythmum Ensemble.

Georgie Tresidder teaches eurythmy at the College and is a performing eurythmist with London Eurythmy. She has been teaching eurythmy and drama at Brighton Steiner School for a number of years and is a qualified eurythmy therapist.

£250 (€220 if paid in full before 15 June)

Alternative venue: Glenilla Road, NW3. Nearest underground: Belsize Park

To book and for more information please contact the London College of Eurythmy on 020 7724 1410 or [lceurythmy@freeuk.com](mailto:lceurythmy@freeuk.com)



Monday 27 August 10am – Saturday 1 September 12.30 noon

**City Art Retreat III**

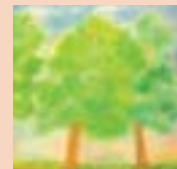
A summer course for Londoners (and those who want to visit!)

Finding artistic inspiration through what the city has to offer – exploring our findings through spiritual eyes and sensitivity to colour and form. Painting, drawing, museum and park visits will form a balanced and rejuvenating whole. Clare Kunze is a painter, tutor and Anthroposophical arts practitioner who has been creating classes, paintings and workshops for over twenty years.

£240. Includes materials and tea/coffee

Alternative venue: Glenilla Road, NW3. Nearest underground: Belsize Park

To book and for more information please contact Clare on 01342 323948 or email [care4art@yahoo.co.uk](mailto:care4art@yahoo.co.uk)



Special Events	Page 3
Tuesday Talks	4/5
Workshops	6/7/8
Courses	9
Classes	10
Groups	11
Parenting and Family Activities	12
Performances	13
Information & Bookings	15/16



## The Grail

In the present day there has been a huge reawakening of interest in the so-called Holy Grail. Many different interpretations are offered as to what it actually is and so it becomes important to try to gain a clearer understanding about it. Drawing on Rudolf Steiner's Grail research, the following talks by Sylvia Francke and David Lowe are a contribution to towards this end.

Tuesdays at 7.30pm  
Donations Welcome

Due to the renovation work happening over the summer we are unable to offer refreshments before the talks. Please feel free to bring your own.



## The Holy Grail and Albion

With Sylvia Francke

### 1 May – The Embryo of Individuality

In ancient times, according to Spiritual Science, individualised human consciousness was far less defined. The path to our modern individual consciousness was begun in the High Sun-Mysteries of Atlantis and later passed through the Hibernian Mysteries, which were the cradle of the Celtic-tradition, leading to esoteric Christianity. Many centuries later, the Rosicrucians in Britain continued to foster this impulse, particularly those responsible for the creation and staging of Shakespeare's plays. This talk will explore this development.

### 8 May – English Landscapes and the Grail Castle

The latent energy in parts of the British countryside may hold the mystery that leads to our discovery of the Grail Castle of legend. This could explain why the stories of King Arthur and the Grail have been located here. Sylvia will explore the existence of the hidden guardians who have appeared when these islands were endangered.

### 15 May – Feirefis and Parsival

Fiererfis, the knight who challenges Parsival as he approaches the Grail Castle, has been described as the representative of humanity in general. We may not enter the castle unless we do so together with him. This is a solemn warning to all those who feel so secure in their own particular nationality and belief system that they create an ever widening abyss between themselves and the 'other'. How will Arthur re-awaken? And will we finally cross the threshold of the Grail Castle?

*Sylvia Francke has just finished rewriting 'The Tree of Life and the Holy Grail' (Temple Lodge 1996) which will be republished in summer 2007. She is a trustee of the Research into Lost Knowledge Organisation (RILKO).*

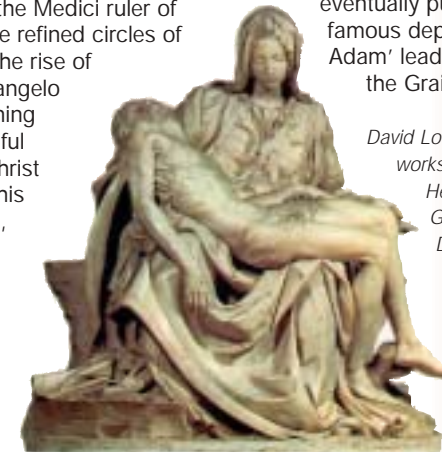


## Michelangelo and the Grail Impulse

Lectures with slides by David Lowe

### 29 May – From Florence to Rome

Michelangelo as a young man became an artist against his father's wishes. He was taken up by Lorenzo the Magnificent, the Medici ruler of Florence, and entered into the refined circles of the Platonic Academy. With the rise of Savanorola to power, Michelangelo fled Florence, eventually winning fame in Rome with his beautiful representation of the dead Christ on his Mother's lap. Seeing this statue, the Pietà in St Peter's, Rome, was an important moment for Rudolf Steiner in his research into the Grail and what impulse it has for our time.



### 5 June – The Sistine Chapel

For four years from 1508 to 1512 Michelangelo worked at painting the ceiling of the Sistine Chapel for Pope Julius II. It was a superhuman effort of will. Originally the plan had been for a simple design featuring the twelve apostles.

The complex series of frescoes he eventually put up there, including the famous depiction of 'The Creation of Adam' lead into the mysteries of the Grail.

*David Lowe gives lectures and workshops in the UK and the USA. He is the co-author of a book on Goethe and Palladio and the Discovery of Metamorphosis.*



Saturday 5 May 10am – 5pm

### Heart Intelligence II: The Compassionate Heart

Transform your problematic Relationships

With Dr Peter Grünewald and George Perry

This follow-up day works with unique heart based techniques to help manage the challenges of a demanding lifestyle. HeartSpheres exercises help to transform emotional responses to daily life events, to gain initiative, creativity and independence and unfold intuitive heart intelligence. They reduce the negative impact of stress and boost vitality and health. This approach has been inspired by the research of D. Childre, J.W. Goethe, R. Steiner, and M. Rosenberg.

Dr Peter Grünewald is a general practitioner in the NHS and medical advisor and practices privately at The Hale Clinic, London. He is the founder of the HeartSpheres approach. His book 'The Quiet Heart: Putting Stress in Its Place' is to be published shortly. See [www.anthromed.com](http://www.anthromed.com) and [www.heartspheres.com](http://www.heartspheres.com).

George Perry is a Development Consultant and Trainer working with clients on the key organisational issues of change, team building and relationship management.

£95/£70 concessions. Advance booking only. Places are limited.

Alternative venue: Temple Lodge, W6. Nearest underground: Hammersmith

To book and for more information please contact Deborah Ward on 07866 617170 or email: [debs10@tiscali.co.uk](mailto:debs10@tiscali.co.uk).



Friday 11 May  
7.30 – 9pm &  
Saturday 12 May  
10am – 5.30pm  
**Healthy  
Balance  
through Art?**

With Clare Kunze

Why do aesthetic experiences make us feel better? Why can creative activity enhance our sense of well-being? The workshop will present Rudolf Steiner's idea of the 'fourfold' human being as a way to understand these connections and bring them to life in an art process. For anyone interested in art and health.

Clare Kunze is a free lance tutor in Art and Anthroposophy. Painting since 1985, she has developed her own style of teaching process-oriented painting based on the colour insights of J. W. Goethe and R. Steiner. She has been teaching at Rudolf Steiner House since 1998.

£70/£55 concessions

Alternative venue: Glenilla Road, NW3. Nearest underground: Belsize Park

To book and for more information please contact Clare on 01342 323948 or email [care4art@yahoo.co.uk](mailto:care4art@yahoo.co.uk)

Saturday 12 May &

Sunday 13 May 10am – 5pm

### Understanding our life story – a biography workshop

With Gil McHattie

In this workshop, we discover the rhythms and patterns within the seemingly unrelated, chaotic events and challenges in our lives – leading to meaning and a clearer path to our future. If we can awaken to who we really are, we can fulfil our potential for self, others and the world.

Gil McHattie spent many years as a teacher for special needs children and young people. She then undertook counselling trainings and training in Facilitation of Biography Group Work at the Centre for Social Development. She has a counselling practice; is a trainer, lecturer and runs workshops with various biographical themes.

£130

Alternative venue: Temple Lodge, W6. Nearest underground: Hammersmith

To book and for more information please contact Gil on 01342 824817 or email [gilmchattie@dsl.pipex.com](mailto:gilmchattie@dsl.pipex.com)

Sunday 20 May 10.30am – 5pm

### Creative Discipline Part III

Guiding children by means of 'deep listening and understanding'

With Lourdes Callen

In this workshop we will continue to explore beneficial ways to contain children's behaviour. We will develop the work with the reactor and the educator within us which started in part II and focus on the role of 'deep listening and understanding' as a new and respectful approach to problem solving. We will look at:

- Deep listening as the basis for



understanding – the key to well being and improved behaviour in children

- Deep listening versus literal listening: distinguishing between wants and real needs
- Perceiving what children are really trying to 'tell' us
- Blocks to understanding
- Recognising the spirit of childhood and children's individual gifts and qualities in the midst of life's business and pressures.

This workshop is part of the series called 'The Art of Creative Discipline' but it can also be attended as a stand-alone event.

Lourdes Callen is a counsellor and parenting facilitator with a background in Steiner Early years Education. She gives talks and workshops both here and in Spain and is author of the forthcoming book 'A Time for Childhood'.

See [www.atimeforchildhood.com](http://www.atimeforchildhood.com)

£60/£45 concessions. Limited places, early booking advisable. Please bring your own lunch.

Sunday 20 May 2 – 5pm

### Do you love Movement?

Do you like Music?  
Tone Eurythmy workshop

With Hajo Dekker

Eurythmy is an art of movement that arose out of the work of Rudolf Steiner.

Poetry, music, colour: through eurythmy all soul experiences can be expressed in movement. The intrinsic gestures of musical tones, intervals and each sound and soul quality of speech, initially given by Steiner, have since been developed by others. Pieces of music as well as poetry can be performed by a solo artist or in groups.

With its tendency towards beauty and harmony, eurythmy provides food for the soul, which is so often lacking in our everyday lives. It puts us back in touch with the creative sources of life, counteracting the hardening influence of everyday living. Everyone is welcome, no experience necessary - bring soft shoes and comfortable clothes.

Hajo Dekker is course director at the London College of Eurythmy and brings a wealth of experience with him. Prior to his 19 years of teaching at the College



as well as the Peredur Centre for the Arts, he taught and performed extensively throughout the world with the Stuttgart Eurythmeum Ensemble.

£20/ £15 concessions.

To book and for more information please contact the London College of Eurythmy on 020 7724 1410 or email [lceurythmy@freeuk.com](mailto:lceurythmy@freeuk.com)

Sunday 10 June 10.30am – 5pm

### Approaches to Steiner Education: Re-discovering the Essence of Play

With Sylvie Héту and Richard House

Humankind's future may depend upon how, and with what, our children are allowed to play. We will explore - in part experientially - the deep nature of play for children, based on knowledge gained from the study of anthroposophy, Steiner education and modern research; and how intellectualism and technology influence children's education, play and toys. The workshop will include practice with play and toys.

Sylvie Héту is a teacher, an international trainer-lecturer on education and parenting, member of the International Association of Infant Massage Education Committee, and co-founder of the international Massage In Schools Programme.

Richard House, a trained Steiner class and Kindergarten teacher, lectures in Therapeutic Education at Roehampton University. He co-initiated the Telegraph's 'Open Letter' on 'toxic childhood', and writes extensively on education and parenting. Richard and Sylvie are also co-founders of Ur Publications & Programmes Inc. (Montreal)

£40/£30 concessions Early booking advisable.

Please bring lunch to share if you wish.

For further details email: [r.house@roehampton.ac.uk](mailto:r.house@roehampton.ac.uk)

Sunday 10 June 11am – 4.30pm  
London Biodynamic Gardeners

### The Rose: the Queen of all Flowers

With Dorette Schwabe

This workshop will explore the origins and history of the rose, considering its various aspects including its deep connection to the soil. Dorette will then share tips on the best methods for planting and cultivating roses. There will be an 'advice



shop' in the afternoon and the last hour will be spent stirring the soil preparation BD500. Please bring an empty bottle (pint/litre) if you want to take some home for your garden.

*Dorette Schwabe trained in horticulture and Biodynamics in Switzerland where she ran a landscape gardening business for 10 years. She is now one of the UK's foremost biodynamic gardeners.*

Collection for expenses

Sunday 23rd June 10am – 4.30pm

### The Care of the Young Child: Enriching the Environment and Creating Daily Rhythms

With Lourdes Callen



Many parents question how to encourage children's co-operation. By understanding their needs in the first years we can increase their positive responses to people and situations. In this workshop we will explore how to enhance children's well being and contentment through enriching the environment and creating daily rhythms. We will be looking at:

- How to create a beneficial atmosphere around the child that engenders beauty, calmness and possibilities for learning
- How to nurture the physical and soul environment
- Cultivating security through introducing and maintaining Rhythm
- Caring for transitions between activities
- Dealing with obstacles

In this workshop we can meet each other in a space that encourages support and learning. There will be opportunities for adults to bring questions and experiences related to parenting.

*Lourdes Callen – see workshops p8*

£60/£45 concessions. Limited places, early booking advisable. Please bring your own lunch. Alternative venue: Temple Lodge, W6. Nearest underground: Hammersmith

To book and for more information please contact Rainer on 01342 826727

Sunday 24 June 2.30 – 5pm

### Developing the Heart Chakra

With Dr. Sue Peat

Just as we have a physical body with physical organs (e.g. eyes and ears), we also have spiritual organs in our spiritual bodies, which most of us are less aware of. Rudolf Steiner described exercises by which we can develop and use these organs for the good of humanity. This workshop we will explore his ideas and methods in relation to the heart chakra.

*Sue Peat is a medical consultant specialising in pain control. She facilitates a regular group which works with Rudolf Steiner's book 'How to Know Higher Worlds'. See Groups p11*

Donations welcome

Sunday 1 July

2.30 – 5pm

### What Happens When We Die?

With Philip Martyn and Terry Goodfellow

In this workshop we will consider our spiritual journey after death and share some meditative work and simple exercises.

*Philip Martyn is a group work facilitator and co-author of 'Crossing the Threshold', a book about death and dying.*

*Terry Goodfellow is co-ordinator at Rudolf Steiner House.*

Donations welcome

Sunday 8 July 2 – 7pm

### Reading 'The Portal of Initiation' – Rudolf Steiner's first Mystery Drama

Written in 1910, this epic drama of the interweaving of the destinies of a group of seekers, makes visible the mysteries of initiation, karma and the workings of the human double. This afternoon, facilitated by Philip Martyn (see above workshop) is part of a series of readings of Steiner's four Mystery Dramas – to be continued next term. Copies of the Dramas are available from the bookshop and library.

Donations welcome



## WEDNESDAYS

A one-year part time course starting 26 September 2007 – July 2008

### Painting and Anthroposophy

With Clare Kunze

For people with an interest in developing their artistic skills and expanding their spiritual horizons, through:

- Painting and Drawing
- Developing Attentiveness to Nature and Art
- Understanding Anthroposophy

*Clare Kunze is a free lance tutor in art and anthroposophy. Painting since 1985, she has developed her own style of teaching contemplative and therapeutic painting, holding regular classes, workshops and individual sessions in London and elsewhere.*

£520/470 concessions per term. Conditions apply.

Alternative venue: Glenilla Road, NW3.

Nearest underground: Belsize Park

For more information please contact Clare on 01342 323948 or email [care4art@yahoo.co.uk](mailto:care4art@yahoo.co.uk)



## THURSDAYS

10 May – 28 June (8 weeks)

6.30 – 7.45pm

### Creative Voice

With Daniel Skinner



Using Rudolf Steiner's speech exercises as a basis for development, this course allows for experimentation and discovery in the use of the

voice, and is ideal for teachers, performers and anyone who would like to extend their vocal articulation, projection and range. During the term we will work with drama, poetry and prose, concluding with a presentation.

*Daniel Skinner was performer and director of The Rose Theatre Company, and has worked with international directors such as Enrique Pardo (Roy*

*Hart, Pantheatre), and taught voice at the London International School for Performing Arts.*

£5/£4 concessions per single session

£36/£29 per term if paid in advance

## FUTURE COURSES

### Michael Chekhov Studio London

Currently on European tour.

For dates of future courses please

contact MCSL on 020 8696 7372

or email: [info@michaelchekhovstudio.org.uk](mailto:info@michaelchekhovstudio.org.uk).



### Rudolf Steiner's Ideas on Economics

For information on future courses at Rudolf Steiner House and elsewhere please contact Arthur Edwards (01452 810764) or Christopher Houghton Budd (01227 738207) or email [economics@goetheanum.org](mailto:economics@goetheanum.org)

For more details see

[www.economics.goetheanum.org](http://www.economics.goetheanum.org).

**MONDAYS**

14 May – 25 June (6 weeks)  
6.15 – 7.30pm

Do you love Movement? Do you like Music? Do you enjoy Poetry?

**Discover Eurythmy – A Modern Art of Movement**

With Hajo Dekker

Eurythmy is an art of movement that arose out of the work of Rudolf Steiner. "Its grace, beauty and harmony bring great healing and enlivening strength into our daily lives; ... a form of anthroposophy which uplifts, enlivens and refreshes body, soul and spirit." (A participant). No experience is necessary, please bring soft shoes.

Hajo Dekker is course director at the London College of Eurythmy and brings a wealth of experience with him. Prior to his 19 years of teaching at the College and at the Peredur Centre for the Arts, he taught and performed extensively throughout the world with the Stuttgart Eurythmeum Ensemble.

£42/£32 concessions per term if paid in advance

**TUESDAYS**

8 May – 26 June (8 weeks)  
6 – 7.30pm

**The Amateur Eurythmy Society**

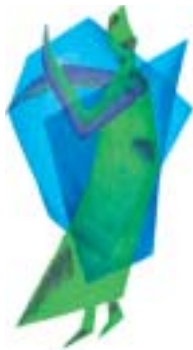
With Christina Buecking

For all people with a love of movement and dance. We will work with music, poetry and drama towards our own stage production. Come and join anytime. Feel free to watch.

- Includes: live music • improvisation
- new techniques • develop your own performance
- individual training
- professional help and guidance.

Christina Buecking is a eurythmist of many years experience and artistic director of 'Theatre Confetti'.

£5/£3.50 concessions per single session  
£36/£24.50 concessions per term if paid in advance



**WEDNESDAYS**

9 May – 27 June (8 weeks) 7 – 8.30pm

**Bothmer Movement** - Inner and outer movement for mind and body

With Brigitte Wuertele

Comprising of a rich blend of 20th century philosophy and movement therapy, Bothmer Movement opens many doors of communication between the mind and body. The result is more positive energy, more self-awareness and improved physical well being. It is also good for stress management and relaxation. A dynamic, lively, interactive, but also meditative and communicative class. Everyone is welcome anytime!

Brigitte Wuertele graduated in Bothmer Movement in Stuttgart in 1989 and has given workshops and as well as one to one sessions in Germany and Egypt since then. She also studied 'Psychomotoric' and Pressel Massage.

£5/£4 concessions per single session  
£36/£29 per term if paid in advance

**THURSDAYS**

26 April – 21 June (8 sessions)

Half-term 31 May

**Painting Classes** with Clare Kunze

3.45 – 5.30pm Discover the world This painting class introduces the wet-on-wet watercolour technique to newcomers and provides an opportunity to more experienced painters to refine their ability to create form out of colour. We will visit the realms of the minerals, plants animals and mankind. Expert guidance given for all levels of ability.

6.15 – 8pm Colour is the substance of the soul. Newcomers especially are invited to this evening class which will introduce themes and insights into ways of working with colour, through exploring colour moods and simple images in the relaxing wet-on-wet watercolour technique. More experienced painters are also welcome and will be given additional challenges.

Clare Kunze - see Workshops p6

Taster £12 first session only. £96/£84 concessions Commitment for the whole term, and advance payment required. Those booking and pre-paying both classes will receive a 10% discount.

Alternative venue: Glenilla Road, NW3.

Nearest underground: Belsize Park

To book and for more information please contact

Clare: 01342 323948/email care4art@yahoo.co.uk

**MONDAYS**

14 May – 2 July (8 sessions)  
7.30 – 9pm

**Personal Development**

With Sue Peat

Rudolf Steiner outlined many exercises which, when carefully and patiently carried out, can enable us to develop the hidden faculties that we all have. In this group we share our experiences of doing the exercises he describes in his book 'How to Know Higher Worlds'. All warmly welcome! Donations welcome

14 May – 18 June (5 sessions)

No session on 28 May

**Introductory Studies in Projective Geometry**

With Edwin Ladaga and Pat Hague

These sessions are designed to enable participants to experience the qualities of form and of space with the aid of simple drawings, independent of any measurement and calculation.

Donation. Beginners welcome



**WEDNESDAYS**

9 May & 23 May, 6 & 20 June, 4 July (5 sessions) Fortnightly 7.30 – 9pm

**Karma Studies**

With Phillip Martyn and David Lowe

This group will be working with Volume 2 of Rudolf Steiner's lectures on karmic relationships and the exercises which are set out in this book (available from both the bookshop and the library). Donation.

2, 16 & 30 May, 13 & 27 June (5 sessions) Fortnightly 7.30 – 9pm

**Esoteric Christianity in the Light of Anthroposophy and Art**

With Peter van Breda

Donation. Newcomers welcome

**THURSDAYS**

10 May & 24 May, 7 & 21 June, 5 July (5 sessions) 7.30 – 9pm

**Introduction to Rudolf Steiner's Teachings**

With Phillip Martyn

Donation. Newcomers welcome

**FRIDAYS**

4 May & 18 May  
7.30 – 9pm  
(2 sessions)

**Looking At Art – conversation and slides**

With Tricia Barker, Trevor Dance and David Lowe

**The Art of William Blake**

Celebrating the 250th anniversary of Blake's birth in 1757.

Donations welcome

4 May – 22 June (8 sessions)

7.30 – 9pm

**Pathways to the Spirit**

Weekly talks and discussion from Anthroposophical and other viewpoints with Augusto Monteiro, Clemens Brenan and others.

Donations welcome

4 May

What is the Gnostic Gospel of Judas?

With George Wood (Gnostic Christianity)

11 May

The Pathology of Grief and its Spiritual Implications

With Fr Gary Bradley (Anglican Tradition)

18 May

The Spiritual Version of World Evolution from the Akashic Record

With Phillip Martin (Anthroposophy)

25 May

The Importance of Ritual in Daily Life With Aamasade Shepneki (African Spirituality)

1 June

Guardian Angels and the Angelic Hierarchy With Carolyn Williams (Angelic Healing)

8 June

Leonardo Da Vinci: a Spirit Unchained and a Mind Uncontained

With Trevor Dance (Anthroposophy)

15 June

The Sacred Teachings of the Tao With Augusto Monteiro (Taoism)

22 June

Bridging Belief Systems – Inter-Faith Esotericism

With John Gordon (Theosophy)



London College of Eurythmy presents  
**Poetry and Music made visible through Movement**

A presentation of the term's work by the students of the 1st and 3rd year

Admission free

See also Graduation Performance below

Date and venue to be announced.

For more details nearer the time please contact the London College of Eurythmy on 020 7724 1410 or email [lceurythmy@freeuk.com](mailto:lceurythmy@freeuk.com)

London College of Eurythmy 4th year students present

**Eurythmy Graduation Performance Poetry and Music made visible through movement**

Eurythmy is an art of movement that arose out of the work of Rudolf Steiner and has since been developed by others. Poetry, music, colour: through eurythmy all soul experiences can be expressed in movement. Pieces of music as well as poetry can be performed by a solo artist or in groups. With its tendency towards beauty and harmony eurythmy provides food for the soul which is so often lacking in our everyday lives for both audience and performer and puts us back in touch with the creative sources of life.



Admission free

Date and venue to be announced.

For more details nearer the time please contact the London College of Eurythmy on 020 7724 1410 or email [lceurythmy@freeuk.com](mailto:lceurythmy@freeuk.com)



the environment and creating daily rhythms. We will be looking at:

- How to create a beneficial atmosphere around the child that engenders beauty, calmness and possibilities for learning
- How to nurture the physical and soul environment
- Cultivating security through introducing and maintaining Rhythm
- Caring for transitions between activities
- Dealing with obstacles

In this workshop we can meet each other in a space that encourages support and learning. There will be opportunities for adults to bring questions and experiences related to parenting.

Lourdes Callen – see workshops p8

£60/£45 concessions. Limited places, early booking advisable. Please bring your own lunch.

Alternative venue: Temple Lodge, W6. Nearest underground: Hammersmith

To book and for more information please contact Rainer on 01342 826727.

Sunday 10 June 10.30am – 5pm  
**Approaches to Steiner Education: Re-discovering the Essence of Play**

With Sylvie Héту and Richard House

Humankind's future may depend upon how, and with what, our children are allowed to play. We will explore - in part experientially - the deep nature of play for children, based on knowledge gained from the study of anthroposophy, Steiner education and modern research; and how intellectualism and technology influence children's education, play and toys. The workshop will include practice with play and toys.



Sylvie Héту is a teacher, an international trainer-lecturer on education and parenting, member of the International Association of Infant Massage Education Committee, and co-founder of the international Massage In Schools Programme. Richard House, a trained Steiner class and Kindergarten

teacher, lectures in Therapeutic Education at Roehampton University. He co-initiated the Telegraph's 'Open Letter' on 'toxic childhood', and writes extensively on education and parenting. Richard and Sylvie are also co-founders of Ur Publications & Programmes Inc. (Montreal) £40/£30 concessions Early booking advisable. Please bring lunch to share if you wish. For further details email: [r.house@roehampton.ac.uk](mailto:r.house@roehampton.ac.uk)

Sunday 23rd June 10am – 4.30pm  
**The Care of the Young Child: Enriching the Environment and Creating Daily Rhythms**

With Lourdes Callen

Many parents question how to encourage children's co-operation. By understanding their needs in the first years we can increase their positive responses to people and situations. In this workshop we will explore how to enhance children's well being and contentment through enriching



Fridays 11 May – 29 June  
(8 sessions) 10am – 12 noon  
**Snowdrop Parent and Toddler Group**

For children up to 3 years

Cost per session per child £6/£5

concessions. £3 for second sibling.

Concessionary price if paid in advance.

Alternative venue: Glenilla Road, NW3.

Nearest underground: Belsize Park.

New group also starting in NW10.

For more information about both please contact

Letitia Costain on 020 8806 8818.



Sunday 20 May 10.30am – 5pm  
**Creative Discipline Part III Guiding children by means of 'deep listening and understanding'**

With Lourdes Callen

In this workshop we will continue to explore beneficial ways to contain children's behaviour. We will develop the work with the reactor and the educator within us which started in part II and focus on the role of 'deep listening and understanding' as a new and respectful approach to problem solving. We will look at:

- Deep listening as the basis for understanding – the key to well being and improved behaviour in children
- Deep listening versus literal listening: distinguishing between wants and real needs
- Perceiving what children are really trying to 'tell' us
- Blocks to understanding
- Recognising the spirit of childhood and children's individual gifts and qualities in the midst of life's business and pressures.

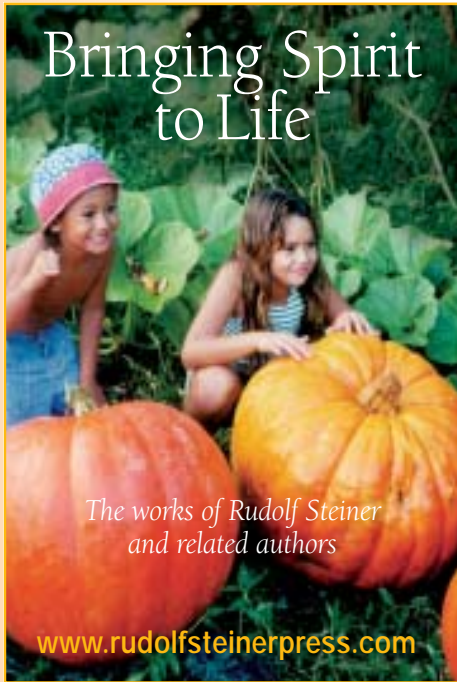
This workshop is part of the series called 'The Art of Creative Discipline' but it can also be attended as a stand-alone event.

Lourdes Callen is a counsellor and parenting facilitator with a background in Steiner Early years Education. She gives talks and workshops both here and in Spain and is author of the forthcoming book 'A Time for Childhood'.

See [www.atimeforchildhood.com](http://www.atimeforchildhood.com)

£60/£45 concessions. Limited places, early booking advisable. Please bring your own lunch.





Bringing Spirit to Life

The works of Rudolf Steiner and related authors

[www.rudolfsteinerpress.com](http://www.rudolfsteinerpress.com)



1st Quarter - Winter 2006/7

**New View**

News and insights springing from Rudolf Steiner's ideas

*Includes: World Events, Health, Education, Self-development, Arts, Science, Environment, Biodynamic Agriculture, Book/Film Reviews*

Quarterly - £18 For 4 Issues

[www.newview.org.uk](http://www.newview.org.uk)  
Tel/Fax: 0118 935 1315

**DISCOVER EURYTHMY**  
*A Modern Art of Movement*



PROFESSIONAL TRAINING  
SUMMER SCHOOL  
WEEKLY CLASSES  
WORKSHOPS

**London College of Eurythmy**

based at Rudolf Steiner House  
020 7724 1410 or [lceurythmy@freeuk.com](mailto:lceurythmy@freeuk.com)

Vccj eX\i]ZcZ Ā

*baVba 6XagX  
YbeFgXaXeJ T VbeY  
GXTM XeGeTa\az  
TgEhWb\_YFgXaXe; bhfX*

I | ZAdcYdc 8ZcigZd[ZgheVg'i'b ZHb eVgh  
VèY1 dg h deh'c VaiVreZXhd[i] h'che'ge\VeY  
gVeYanZneVeYc\Zj Xl'cVaveegIWX!ZVYe\`  
idHZcZgfj VaxZY'iZM ZghVjh'e HZcZg  
@cYzg\vgZc!XhVcYheZXVhi iZM cV`

*IdxcYqj i b dZ XciVĀ*

I | Z: 'gh1 | gZNVgh8di gZ  
9 dgil|nB VZ  
IZa%& % +& + ( dgHb < gH dll  
IZa%& . . : ((++  
Zb Vafir51 VaddgigVe'c\#g#`

L Vaddg1ZM ZgigVe'c\  
9g7g'c B VhZgh  
IZa%&) ' . ' . \* -  
Zb Va'c[d51 VaddgigVe'c\#g#`

L Vaddg: Vgn8] 'al ddY  
I@cYzgVgZc1I gVe'c\  
ArccZ.Da'sZa'  
IZa%& \* - & ( . ( .  
Zb Va' \51 VaddgigVe'c\#g#`

111 # VaddgigVe'c\#g#`

About Rudolf Steiner



In the face of increasing global challenges, Rudolf Steiner (1861 - 1925) pointed to the need for a spiritual renewal of western

culture, in areas including education, agriculture, medicine, economics, the sciences, religion and the arts. Today there are literally thousands of schools, clinics, farms, and other organisations doing practical work based on his insights. He offered a comprehensive path of spiritual development and research, which when pursued can contribute to the creation of a more humane world.



Goetheanum designed by R. Steiner

The Anthroposophical Society in Great Britain is based at Rudolf Steiner House and is part of the General Anthroposophical Society founded by Rudolf Steiner.  
See [www.anthroposophy.org.uk](http://www.anthroposophy.org.uk)

**WANT TO WORK IN A STEINER WALDORF SCHOOL?**

Visit [www.steinerwaldorf.org.uk](http://www.steinerwaldorf.org.uk) for information on job vacancies and Steiner Waldorf education, schools & courses

Steiner Waldorf Schools Fellowship 01342 822115  
Registered Charity 295104

INFORMATION & BOOKINGS

If you would like to take part in any of our workshops or events, join our mailing list, book tickets for a production in the theatre or receive further information on Rudolf Steiner and anthroposophical activities, kindly fill in this form with all the appropriate details, adding payment where required, payable to 'Rudolf Steiner House', and send to:

MAILINGS & BOOKINGS  
RUDOLF STEINER HOUSE  
35 PARK ROAD, LONDON NW1 6XT

PLEASE NOTE THE FOLLOWING:  
Credit Card bookings can only be taken in person. If you require receipt for payment for a booking or enrolment, please send a SAE. Proof of eligibility for concessions is required in all cases. Cancellations with less than two weeks' notice will not be refunded. Lunch may be available for some all day workshops depending on demand, but must be booked by 5pm on the Thursday before the workshop.

OUR CONCESSION PRICES APPLY TO:  
Under 18, over 60, full-time student, ACE card, Westminster Resident and Staff Cards, those in receipt of: Working Family Tax Credit, Invalidation Benefit, Disability Living Allowance, Job Seekers Allowance, Incapacity Benefit.

NAME \_\_\_\_\_

ADDRESS \_\_\_\_\_

\_\_\_\_\_

\_\_\_\_\_

\_\_\_\_\_

TEL \_\_\_\_\_

I enclose payment of £ \_\_\_\_\_

for \_\_\_\_\_ number of people

for \_\_\_\_\_ number of events

please complete details overleaf

PAYMENT: If paying by cheque, please make your cheque payable to 'Rudolf Steiner House'. Where the cost states 'Donation', the amount in brackets is intended as an indication.

